



WALNUT CREEK DOG OWNERS GROUP NEWSLETTER

Volume 2, No. 3 December 2007

“WCDOG – Fostering community spirit through people, pets and parks”

HEATHER FARM DOG PARK OPENS!



WCDOG President Sandra Nakamura-Bush thanks Mayor Sue Rainey



Tony La Russa, founder of Animal Rescue Foundation (ARF), offers congratulations



Officer Pat Duggan and Orphus, the city's new K9 police dog, bring the key to the park to Mayor Rainey



Happy first visitors to the park meet and greet

Highlights from WCDOG's President's message at the opening of the Dog Park at Heather Farm ("Wag World" as we like to call it)

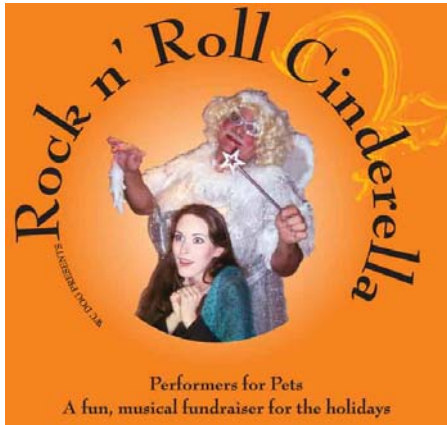
... We are truly grateful to have an all day, off leash, legal place where we and our dogs can exercise and socialize. Thank you to the city of WC for making it ADA-compliant. There are many disabled dog owners out there who now have a safe, enclosed, accessible place to exercise their dog. Because each area has a path around its perimeter, all dog owners can now walk and exercise our dogs.

... Many, many happy hours will be spent in this dog park. Community spirit is fostered and contagious at San Miguel Park and I am sure that attitude will carry

over to this wonderful new dog park. Thank you to all the San Miguel Park users and WCDOG members who have helped to set the tone for responsible dog ownership. Thank you for all of your support over the years. Thank you to our board members, past and present, who have given up their free time to make this dog park possible. Please be considerate of the nearby neighbors by keeping any barking to a minimum and let's make sure we keep this park in pristine condition, as we do at San Miguel. Thank you once again to our dog park champion, Mayor Sue Rainey, to the City Council and to the PROS Commission, who truly listened to the voice of the dog park community.

Sandra Nakamura-Bush WCDOG president

Join in the holiday fun at ROCK N' ROLL CINDERELLA on Saturday, December 15th



Join in the holiday fun and support Walnut Creek dog to raise funds for shade structures and other amenities at our new dog park. Rock n' Roll Cinderella is a rollicking upbeat, offbeat, wacky family show to kick off the holidays. You'll want to join in the singing and dancing to favorite rock songs, as the story of Cinderella takes a sizzling, twisted spin from the rags to riches fairy tale. It's a crazy, colorful comedy ...and a great introduction to live theatre for young children.

Performances are at 3 p.m. and 7 p.m. at Shadelands Civic Arts Center, 111 N. Wiget Lane & Ygnacio Valley Road, Walnut Creek. **Order your tickets now, because it is sure to be a sell out.**

Tickets are \$12 and can be ordered online from www.willowstickets.org or you can call 798-1300. Your tickets can also be picked up at the will call desk before the performance. Tickets are tax deductible as allowed by law. Remember, all tickets benefit the dog park.

If you buy tickets to either show, and also pay your 2008 membership dues, you are invited to the cast party after the 7 p.m. show. Meet the cast, and enjoy snacks, drinks, music and fun. The cast party will be at the Sports Basement, 1881 Ygnacio Valley Road opposite Heather Farm Park. **A big thank you to our friends at the Sports Basement**, who are sponsoring the cast party and supporting WCDOG. **Please write "cast party" on your membership form if you will attend.**

... As for the future of San Miguel Park, it is the City Council's intention that it remain an off-leash dog area for the time being. Further, we will be evaluating whether or not the new off-leash dog area will change the impact of dog owners using San Miguel Park.

October 30, 2007 letter from Mayor Sue Rainey to Sandra Nakamura-Bush

ThankYouThankYouThankYou !!!

- To celebrity attendees at the Heather Farm opening: Mayor Sue Rainey, Tony La Russa, Diablo Light Opera Company Stars 2000, and Orphus.
- To the following WC businesses that stepped up to the plate to support WCDOG and the new park:

Sports Basement
 Floreli Florist
 Postal Annex
 FedExKinko on Mt Diablo Blvd.
 The Balloon Man
 Bill Grant (for video)
 Annabelle's
 Encore Theatrical

We welcome other sponsors. Any business that supports WCDOG will be featured in our newsletters throughout 2008. A **recognition wall**, which will recognize our corporate, business and private sponsors, will be built in the spring. Please check our website for details.


IMPORTANT THINGS TO KNOW

ABOUT THE
WALNUT CREEK
DOG PARK

The Walnut Creek Dog Park will be closed each **Monday morning** for routine maintenance.

The Dog Park will also be closed during and immediately following periods of inclement weather. The status of the park will be available on the City's **Turf Hotline** by phoning **925-256-3574**.

Portions or all of the facility may also be closed for unspecified periods of time in order to repair damage caused by overuse, vandalism, etc. The City will make every effort to provide information about the inaccessibility as quickly and as completely as possible at the Park and/or on the City's website: www.walnut-creek.org


WALNUT CREEK

Introducing your WCDOG board

We, your Walnut Creek Dog Owners Group board members, are very happy to welcome all our new dog park users to the dog park. We have found that good manners and thoughtful handling of any issues can turn a tricky situation into a positive experience. Many a friendship at San Miguel Park started when someone picked up after someone else's dog. Thank you for doing your part to make this dog park a success and a pleasant experience for everyone. Please introduce yourself if you see us at the dog park.



Sandra Nakamura-Bush
President



Monica Kleisath
VP



Pamela Kan
Treasurer



Board members Jennifer Brazil, Bob Diskowski, Marianne Daniel, Nancy Carlin



Board members Kathryn Callant and Joan McClure, Webmaster Jerry Carlin, Newsletter editor Judy Hirabayashi

Look out for WCDOG elections, which are coming up in January. Please contact Kathryn Callant (939-1620) ASAP if you are interested in running for a one-year appointment to the board.

Updates from the Dog Park at Heather Farm (Wag World)

- As with any new facility, there are bound to be problems. The city has been alerted to the need for different pooper scoopers and for holes in the fence to be plugged up. The city has already fixed broken gate latches.
- As a reminder, the small dog park is for dogs 30 pounds and under or frail, elderly dogs. This

rule will be enforced for the protection of dogs and people.

- Please make sure you watch your dog at all times. If your dog poops in the dirt area, you are still required to pick it up.

CESAR MILAN HAS EXCELLENT ADVICE ABOUT DOG BEHAVIOR AND TRAINING. You can see his shows on the National Geographic channel and he has many videos that address common dog issues.

Did you know?

- **There are approximately 20,000 dogs and 30,000+ households in Walnut Creek?** The city has 19 parks, covering 240 acres. We also have 3,000 acres of open space, but this is not a viable option for many dog owners due to foxtails, ticks, accessibility issues, coyote encounters, etc. Now at last we have one acre where we can legally let our dogs off leash.
- **Your support for Walnut Creek Dog Owners Group will help us establish another dog park, perhaps in South Walnut Creek.**
- One of the features we will be installing at the Dog Park at Heather Farm (Wag World) is a **recognition wall** to recognize our corporate, business and private sponsors. We hope our local businesses will consider making a tax-deductible donation to this important community project.
- **Dog parks have proven to foster a new form of human recreation** that happens around dogs. Many wonderful friendships have been formed. There are numerous heart-warming stories and dog adoptions that happen through a dog park where community spirit is fostered and contagious. Dog parks also keep pet owners from using other areas such as school playgrounds, illegally.
- **You can be fined up to \$250 for letting your dog off leash illegally.**
- **The WCDOG website www.wcdog.org is a great source of information and of links to other websites for dog lovers.** Jerry Carlin updates it frequently. Check it out.

Dog Park "Petiquette" and Rules

The WCDOG Board worked with Walnut Creek Parks staff to establish rules and guidelines for the new dog park. One of the things we want to stress is that polite handling of situations with good manners, a balanced viewpoint, and empathy (i.e., with good "petiquette") allows us to not lay down too many rules. We count on seasoned park users to set the tone so dogs and humans have an enjoyable experience socializing. For

everyone's enjoyment, please read and follow these behavior guidelines, and adhere to the dog park rules.

Petiquette

- It is your responsibility to watch your dog(s) at all times when you are in the park. Please clean up after your dog(s). It is also nice to clean up any unclaimed piles when you come across one.
- Owners must stop dogs from digging and immediately fill holes.
- Food, treats, etc. are not allowed.
- Be prepared to share toys.
- Monitor your dog for inappropriate behavior. Handle any conflict with kindness and good manners.
- If your dog is misbehaving, leash him/her, remove your pet from the park, and enforce a "time-out."
- Please check out the notice board for useful information.
- Please be considerate of the surrounding neighbors and park your vehicle in Heather Farm Park when visiting the dog park.

Dog Park Rules

Owners are legally responsible for their dog(s) and any damage and/or injury caused by their dog(s). Persons violating these rules are subject to citation and may be fined.

1. Owners must carry a leash for each dog at all times and leash and unleash dogs only inside the double-gated area.
2. Dogs are allowed off-leash when accompanied by, and under positive control of the person bringing the dog into the park.
4. Dogs must wear a collar with identification and license. No prong/pinch collars, please
5. No more than three (3) dogs per adult are permitted in the park.
6. Dogs in heat are not allowed in the park.
7. The small dog area is for small dogs under 30 lbs. and frail or elderly dogs only.
8. Dogs under 4 months of age are prohibited in the off-leash facility. All dogs must be current on their vaccinations and free of contagious diseases, conditions and parasites.
9. Excessive barking and/or noise is not permitted.
10. Dogs showing aggression toward people and other dogs must be immediately removed from the park by the owner/guardian.

NOW IS THE TIME TO JOIN OR RENEW YOUR MEMBERSHIP IN WCDOG! Annual dues are \$20.

With the new dog park, we appreciate your support for our efforts more than ever. Use the Membership Form below or download the form from our web site www.wcdog.org

Fill out this form and return it with a check for \$20 made out to *WCDOG* to:
2008 Annual Dues (Voting Member), WCDOG, 1867 Ygnacio Valley Rd., Box 120, Walnut Creek, CA 94598

Name _____

Dog(s) Names _____ Dog(s) breed _____

Address _____

Phone _____ Email _____

(Be assured that contact info will be used only for WCDOG communications.)

I don't wish to be a member but add me to your mailing list

I wish to donate an additional \$_____ towards dog park expenses

This donation is in memory of/in honor of my pet(s) named _____

I will be attending Rock and Roll Cinderella and the Cast Party